



SEALFAST
THE SIMPLE SOLUTION

PIPE FITTINGS & VALVES



VALVES

FULL SIZE NEEDLE -
STD DOUBLE BONNET - 316 SS
6,000 PSI - SOFT SEAT -
F X F

FEATURES & APPLICATIONS:

- Sizes available from 1/4" TO 1"
- Screwed double bonnet assembly, Body to bonnet metal seat
- Pressure rated for 6,000 psi @ 98° F
Stem seat: Delrin .(optional peek seat for high temperature application)
- Available in materials 316 SS & Carbon Steel

FEATURES :

- Temperature rating from -65° to 450°F
- Hardened V metal tip design .
- Back seat stem to prevent accidental removal
- Dust & thread caps provided for ingress dust protection

• WOG = Rating indicates the maximum non-shock pressure at ambient temperatures at which the valve may be used.

• CWP = Cold working pressure

| 316 SS | | |
|--------|-------------------|-------------|
| Size | INLET / OUTLET | 6,000 psi # |
| 1/4" | F x F | NVS4F4F-6 |
| 3/8" | F x F | NVS6F6F-6 |
| 1/2" | F x F | NVS8F8F-6 |
| 3/4" | F x F | NVS12F12F-6 |
| 1" | F x F | NVS16F16F-6 |

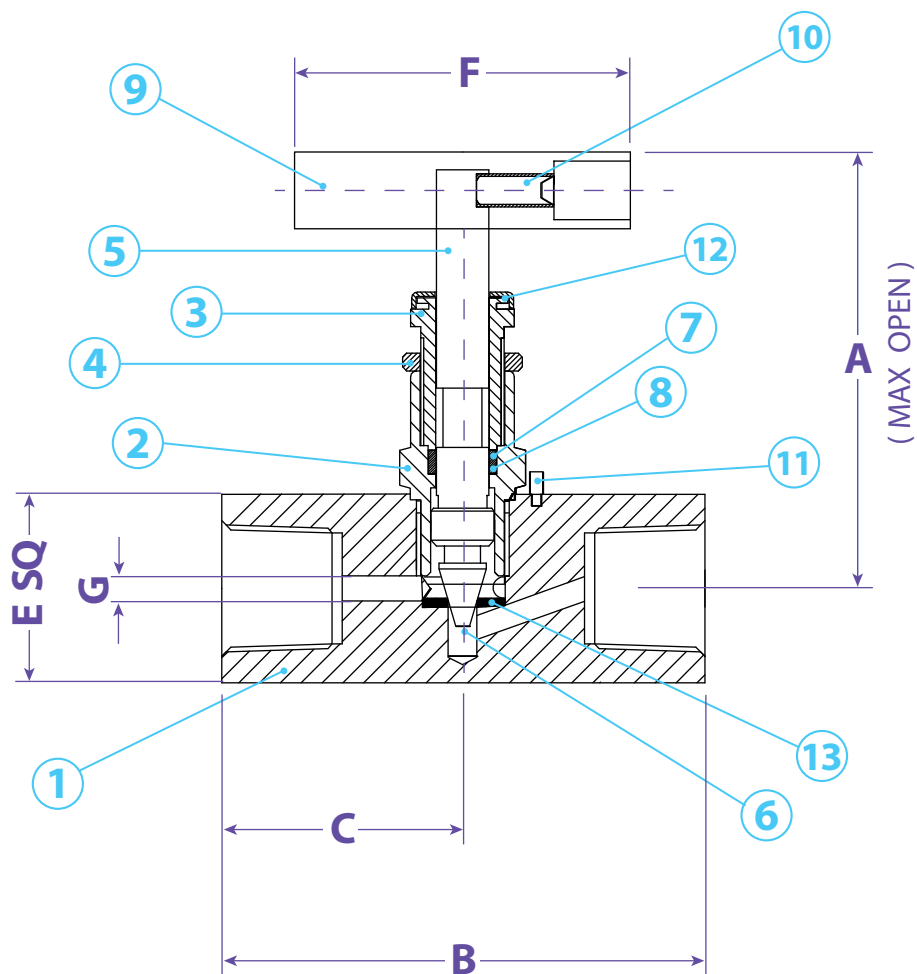
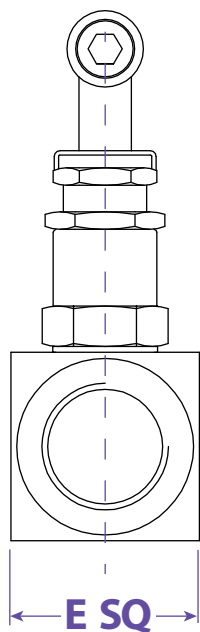


Information contained on this page is for general information purposes only. Seal Fast Inc. assumes no responsibility for errors or omissions for this product.



SEALFAST
THE SIMPLE SOLUTION

PIPE FITTINGS & VALVES



Dimensions

| Size | | A | B | C | ESQ | F | G | Part # |
|------|-------|------|------|------|------|------|------|-------------|
| 1/4" | F x F | 3.37 | 2.17 | 0.89 | 0.87 | 1.97 | 0.16 | NVS4F4F-6 |
| 3/8" | F x F | 3.43 | 2.17 | 0.89 | 0.98 | 1.97 | 0.16 | NVS6F6F-6 |
| 1/2" | F x F | 3.48 | 2.26 | 1.28 | 1.10 | 1.97 | 0.18 | NVS8F8F-6 |
| 3/4" | F x F | 3.68 | 2.76 | 1.28 | 1.50 | 2.36 | 0.24 | NVS12F12F-6 |
| 1" | F x F | 4.60 | 3.15 | 1.57 | 1.57 | 2.36 | 0.28 | NVS16F16F-6 |

Material

| No. | Description | Qty. | Material |
|-----|--------------|------|----------|
| 1 | Body | 1 | 316 SS |
| 2 | Bonnet | 1 | 316 SS |
| 3 | Adj. Bonnet | 1 | 316 SS |
| 4 | Locking Nut | 1 | 316 SS |
| 5 | Stem | 1 | 316 SS |
| 6 | Rotating Tip | 1 | 17.4 PH |
| 7 | O-Ring | 1 | Viton |
| 8 | Packing | 1 | Teflon |
| 9 | Handle | 1 | 316 SS |
| 10 | Allen Screw | 1 | SS |
| 11 | Stopper Pin | 1 | SS |
| 12 | Dust Cap | 1 | Nylon |
| 13 | Soft Seat | 1 | Derlin |

TITLE

NEEDLE VALVES - STD DOUBLE BONNET - SOFT SEAT - 6K - F x F

DISCLAIMER

All drawings and specifications are subject to change without notice. Drawings represent general dimensions of our products. Seal Fast cannot guarantee the dimensions of the part will exactly match those in the drawing. This drawing is the property of Seal Fast Inc. Copying or reproduction of this drawing is expressly prohibited.

MATERIAL

316 SS

DRAWING NOT TO SCALE

PART #

NVS.F.F-6



SEALFAST
THE SIMPLE SOLUTION